

Neighbourhood Planning

Brian Regan – Planning Policy Manager
David Knight – Planning Policy Officer



London Borough of Lewisham Planning Policy Team

Introduction to the planning system

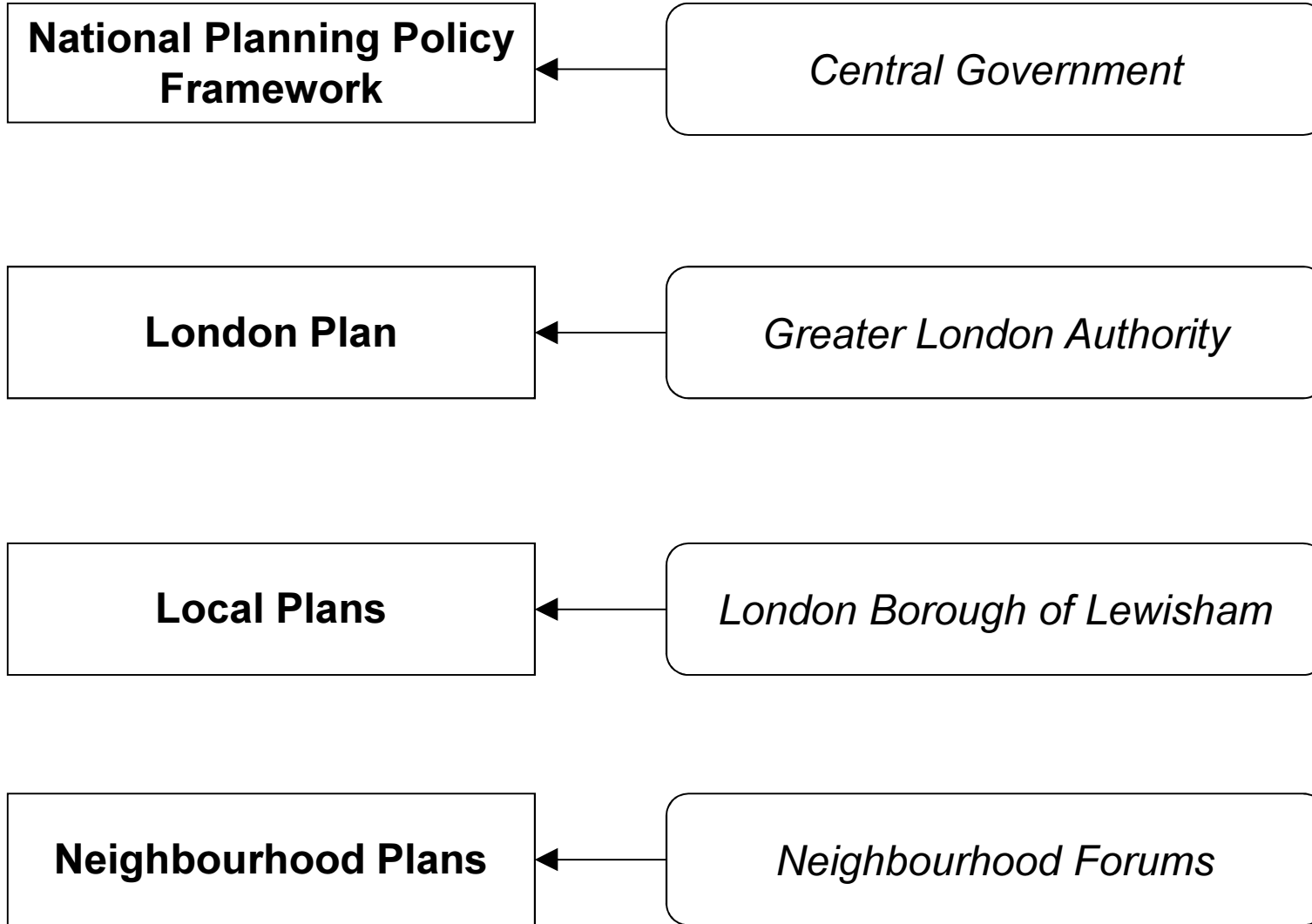
- Planning policy documents are used by planning officers to determine planning applications.
- Planning policy documents are produced at the:
 - National level (Central Government)
 - Regional level (Greater London Authority)
 - Borough level (London Borough of Lewisham).....

Neighbourhood planning

- Neighbourhood plans: new type planning policy document at the neighbourhood level.
- Neighbourhood plans are produced by local community groups, not the council.
- Neighbourhood plans are entirely optional – the community decides whether to produce one.

Planning Document

Produced by



In order to produce a
neighbourhood plan....

Formal designations (1)

- In order to produce a neighbourhood plan, a community group must:
 - be designated as a **Neighbourhood Forum** by the Council
 - be designated a **Neighbourhood Area** by the Council
- Forum and Area applications must be submitted by community groups to the Council's Planning Policy team.

Formal designations (2)

- Designations are made by the Mayor, who receives advice from planning officers.

Neighbourhood Forums (1)

- Neighbourhood plans can only be produced by Neighbourhood Forums.
- Any group can apply to become a neighbourhood forum, but must meet basic criteria:
 - Established with express purpose to improve area,
 - Membership open to residents, workers and local elected members,
 - A minimum of 21 people,
 - Has a written constitution.

Neighbourhood Forums (2)

- There are further detailed issues that the Council should consider, including whether the members are representative of the local community.

Neighbourhood Areas (1)

- Neighbourhood plans can only be produced for designated areas.
- Community groups can apply to the Council to designate any area they choose.
- Area designation application can be submitted at same time as forum designation application.

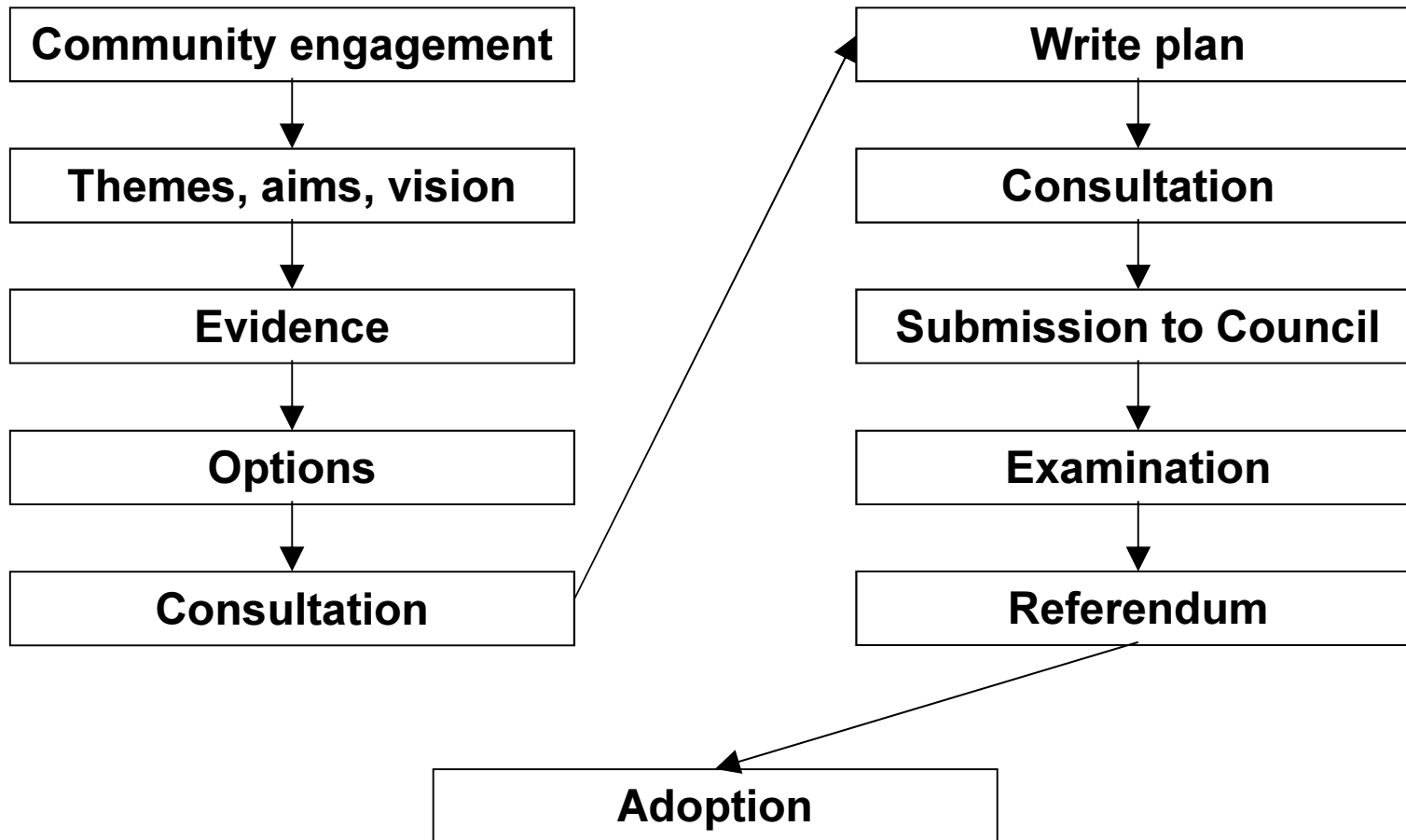
Neighbourhood Areas (2)

- An area should be based on local people's *“understanding and knowledge of the geography and character of the neighbourhood.”* (National Planning Practice Guidance)
- Not required to follow administrative boundaries, however cross-borough working is likely to take longer.

Neighbourhood Plan

- Once designated, a forum can produce a neighbourhood plan.
- A neighbourhood plan contains planning policies to influence future developments.
- Estimated minimum production time of 12 months.
- Neighbourhood plans must be independently examined and then be voted for adoption by public referendum.

Neighbourhood plan-making process (example)



Community Infrastructure Levy (CIL) (1)

- CIL is money collected from new developments. From Spring 2015.
- No neighbourhood plan in place = 15% of local CIL collected spent within community
- Neighbourhood plan in place = 25% of local CIL collected spent within community

Community Infrastructure Levy (CIL) (1)

- Money spent by Council, in consultation with community
- Spending can be guided by infrastructure requirements identified in neighbourhood plan

Status of neighbourhood planning in Lewisham

- **Crofton Park & Honor Oak Park:** designated forum & area.
- **Grove Park:** designated forum & area.
- **Corbett Estate:** submitted forum and area applications to Council.
- **New Cross:** draft application stage.

Further advice

- Advice notes available on the Council's website: Google "Lewisham neighbourhood plans".
- Detailed guidance and funding information available on the Locality website:
<http://locality.org.uk/>

Contacts

- Contact the planning policy team to discuss further.
- We can meet with prospective neighbourhood forums.
- planning.policy@lewisham.gov.uk
- Brian Regan, Planning Policy Manager:
020 8314 8774
- David Knight, Planning Policy Officer:
020 8314 7669